



LEICA TV Adapter



LEICA Microscope Phototube Adapter (34.4 mm Interface)

Convert LEICA trinocular microscope phototubes/heads/ports (with standard 34.4 mm / 1.35" inner diameter insertion end) to standard camera mounts:

- **C-Mount** (25.4 mm / 1", 32 TPI)
- **T2 Mount** (M42x0.75 mm)
- **M52 Mount** (M52x0.75 mm)

Built-in Reduction Lens Options:

Available with optical reducers: 2.25X, 1.5X, 1.2X, 1X, 0.8X, 0.63X, 0.5X, and 0.35X

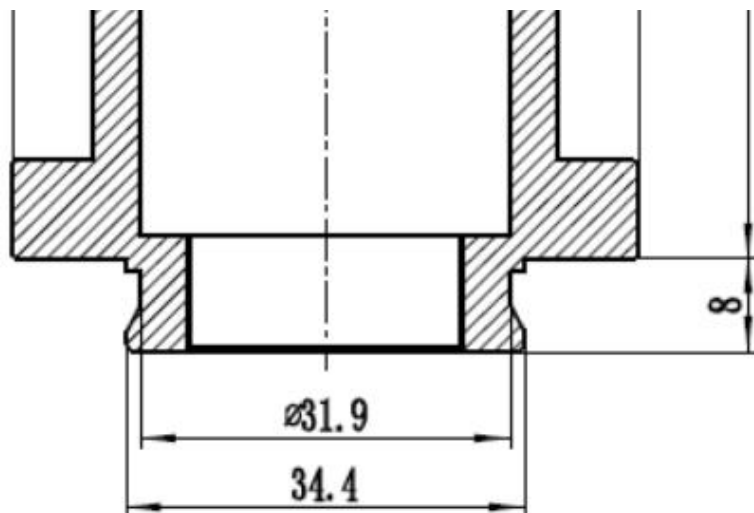
Designed for CCD/CMOS sensors: 2.7", 1.8", 4/3", 1", 2/3", 1/1.8", 1/2", 1/2.5", 1/3", 1/4"




Compatible NIKON Microscopes:

Specially designed for LEICA DM series biological and industrial microscopes with UIS trinocular ports

Features

- High-durability stainless steel construction
- Telecentric optical design minimizes light loss
- Maintains parfocality with various objective lenses
- Diffraction-limited MTF ensures high-resolution image quality
- Aperture fully matched to the exit pupil of LEICA UIS objectives



Supported Microscope	Specially designed for LEICA DM series biology microscopes and industrial microscopes			
Photo	Model	Magnification	Sensor Size	Model
	HM52 2.25X LK225XM52	2.25X	2.7", 1.8", 4/3", 1"	M52
	HT2 1.5X LK150XT2	1.5X	1.8", 4/3", 1", 2/3"	T2-Mount
	11541510-120 LK120XT2 HT2 1.2X (New)	1.2X	4/3", 1"	T2-Mount
	11541510 LK100XC HC 1.0X	1X	1", 2/3"	C-Mount
	11541510-080 LK080XC HC 0.80X	0.8X	1", 2/3"	C-Mount
	11541543 LK070XC HC 0.7X	0.7X	2/3", 1/1.8", 1/2"	C-Mount
	11541544 LK055XC HC-0.55X	0.55X	1/1.8", 1/2", 1/2.5"	C-Mount
	11541512 LK035XC HC-0.35X	0.35X	1/2.5", 1/3", 1/4"	C-Mount

LABLINK INSTRUMENTS

- Plot no. 435, Sector 2, HSIIDC Saha, Saha, Ambala (Haryana) India - 133104.
- Plot no 3-6-164/2, 2nd Street, Hyderguda Himayatnagar, Hyderabad (Telangana) India - 500029

Contact us:

Email:- info@lablinkinstruments.com
www.lablinkinstruments.com, www.micaps.com

